

MPLS VPN

Seamless, secure connections for your global network

You need a reliable way to connect multiple locations across your business. But what is the best way to do this securely and at scale?

Our MPLS VPN service, enables you to connect sites worldwide through a private Layer 3 mesh network that is easy to configure and built for security, resiliency and performance. As your network requirements grow, you can easily add new locations while maintaining the redundancy and reliability your business depends on. This service is ideal for global enterprise connectivity, disaster recovery, secure site-to-site networking and WAN optimisation.

Why choose PCCW Global's **MPLS VPN**



Easy to manage: Predictable yet dynamic routing between multiple endpoints.



Naturally resilient: The full mesh architecture of our MPLS VPN service makes it ideal for disaster recovery and prevention.



Low-latency performance: Protocol-transparent connections designed to support latency- and jitter-sensitive applications with minimal transmission delay.



Cost-effective: Depending on your bandwidth requirements, our MPLS VPN is a cost-effective way to scale and grow your network.



Secure: Reliable, static routing that reduces the network attack surface and makes your organisation less susceptible to cyberattacks.



Optimised for performance: Allows traffic shaping and policing for optimal bandwidth usage across a variety of applications.

Features

- Visibility across your network at all times.
- Reduced latency, packet loss, and jitter.
- Multiple class of service options available.
- High network availability SLA (99.99%).
- Can be easily configured for disaster backup and recovery.

Keeping your data **moving and secure**

As your network requirements grow, our MPLS VPN service makes it simple to add on new sites.



Can easily be configured to securely connect multiple network endpoints worldwide, including small offices and remote workers.



Ensures you've got the network resiliency and redundancy you need at all times.



Designed to support a mix of enterprise applications on a single network.



Allows traffic shaping and policing for optimal bandwidth usage across a variety of applications.



Guaranteed performance underpinned by comprehensive SLA.



What sets our **MPLS VPN service apart** —

We operate one of the world's leading global and diversified IP backbones.

With vast global coverage delivered through a fully redundant, diverse and resilient network, we help you reach even the most hard-to-access markets worldwide.

Backed by extensive experience in establishing MPLS inter-carrier interconnections, we provide reach to over 180 carrier partners globally, supported by 24x7 Global Service Operation Centres (GSOC) across Asia, Europe and the US.

Our range of value-added services include:

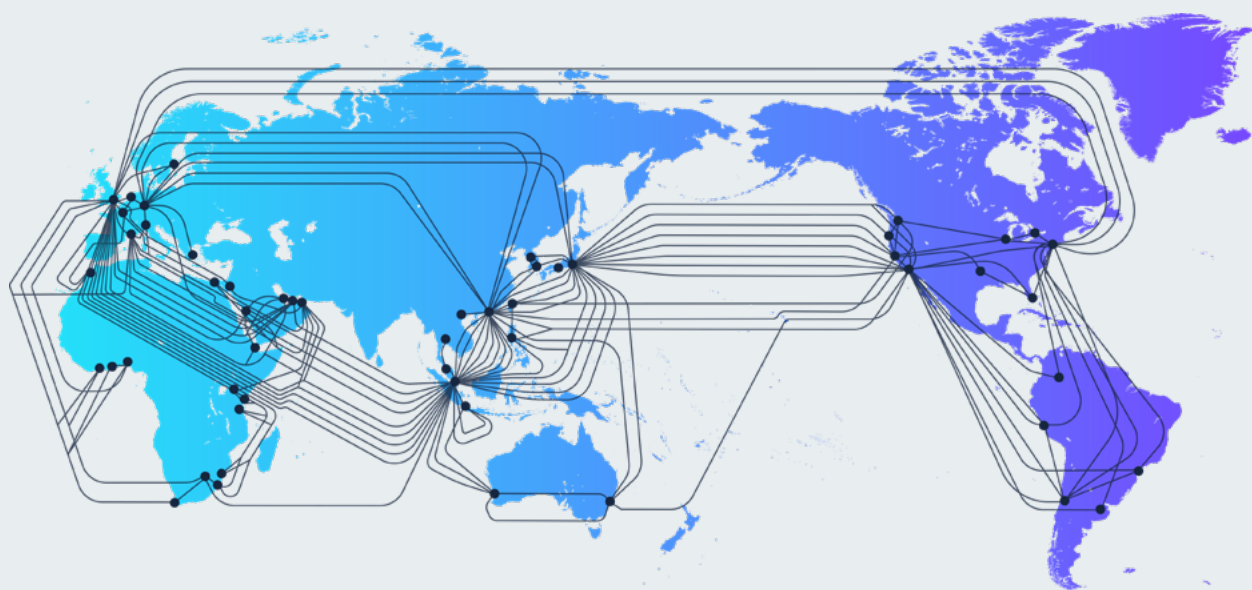
- Visibility across your network at all times.
- Reduced latency, packet loss, and jitter.
- Multiple class of service options available.
- High network availability SLA (99.99%).
- Can be easily configured for disaster backup and recovery.

Over 36Tbps
of IP backbone

Coverage across
over **3000** cities
In **160** countries

152+
on-net IP PoPs

200+
cloud on-ramps
accessible on-demand
via Console Connect

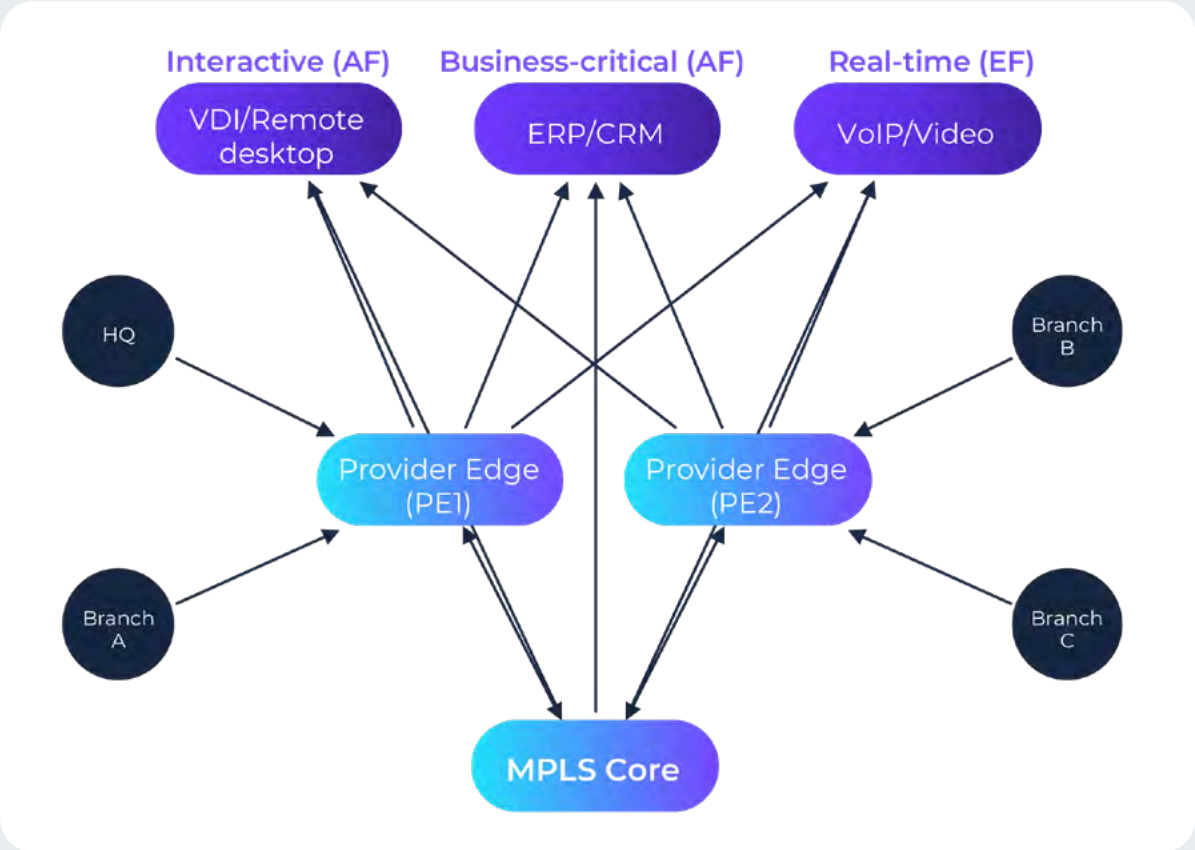


How does it work? —

Our IP network (AS3491) puts you one hop away from the world’s largest cloud and content providers.

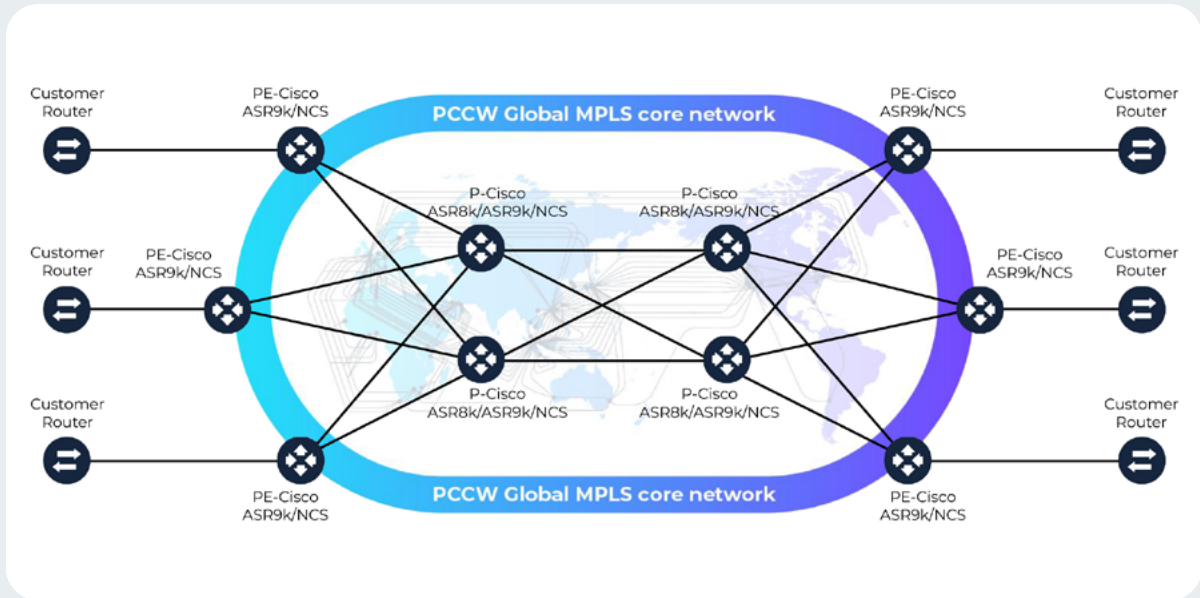
- Route traffic efficiently between multiple sites worldwide.
- Prioritise sensitive traffic using Class of Service options.
- Supports a mix of your applications on a single network.
- Delivers an assured level of network performance, backed by stringent SLAs.
- View essential network usage and monitoring information via our online management portal.

MPLS VPN network QoS Class for enterprise applications



Technical specifications

Our MPLS VPN service is built on a Cisco-based platform, using RFC4364 standard for providing VPN connectivity and RFC3985 pseudowire emulation (Ethernet over MPLS) for providing Layer 2 connectivity.



Talk to us

Australia

Level 3 | 200 Mary Street | Brisbane QLD 4000 | Australia

australia@pccwglobal.com

France

2/F 16 rue Washington | 75008 Paris | France

europe@pccwglobal.com

Greece

268 Kifisias Avenue | Chalandri, Athens | Greece

europe@pccwglobal.com

Germany

Schillerstr. 31 | 60313 Frankfurt/M. | Germany

europe@pccwglobal.com

Hong Kong

20/F, Telecom House | 3 Gloucester Road | Wan Chai | Hong Kong

hongkong@pccwglobal.com

Japan

3/F Marunouchi Mitsui Building | 2-2, Marunouchi 2-chome, Chiyoda-ku | Tokyo 100-0005 | Japan

japan@pccwglobal.com

Singapore

6 Temasek Boulevard | #41-04A/05 | Suntec Tower Four | 038986 | Singapore

singapore@pccwglobal.com

South Africa

Building 12 | 1 Woodmead Drive | Woodmead 2191 | Johannesburg | South Africa

africa@pccwglobal.com

UAE, Dubai

Office 504 & 505 Level 5 | Arjaan Business Tower | Dubai Media City | Dubai

mena@pccwglobal.com

United Kingdom

7/F, 63 St. Mary Axe | London, EC3A 8AA | United Kingdom

europe@pccwglobal.com

United States

475 Springpark Place | Suite 100 | Herndon | VA 20170 | USA

usa@pccwglobal.com

Ready to get started?
Visit our [website](#) to get in touch

